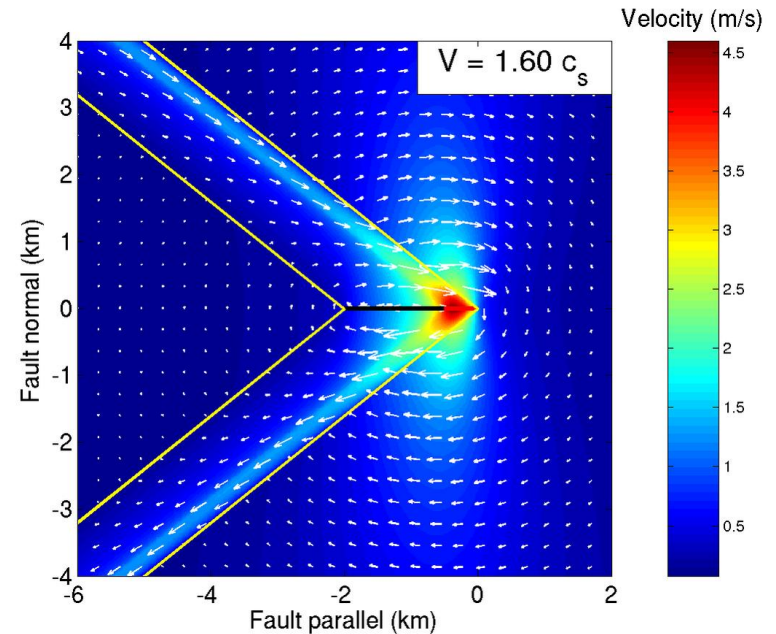


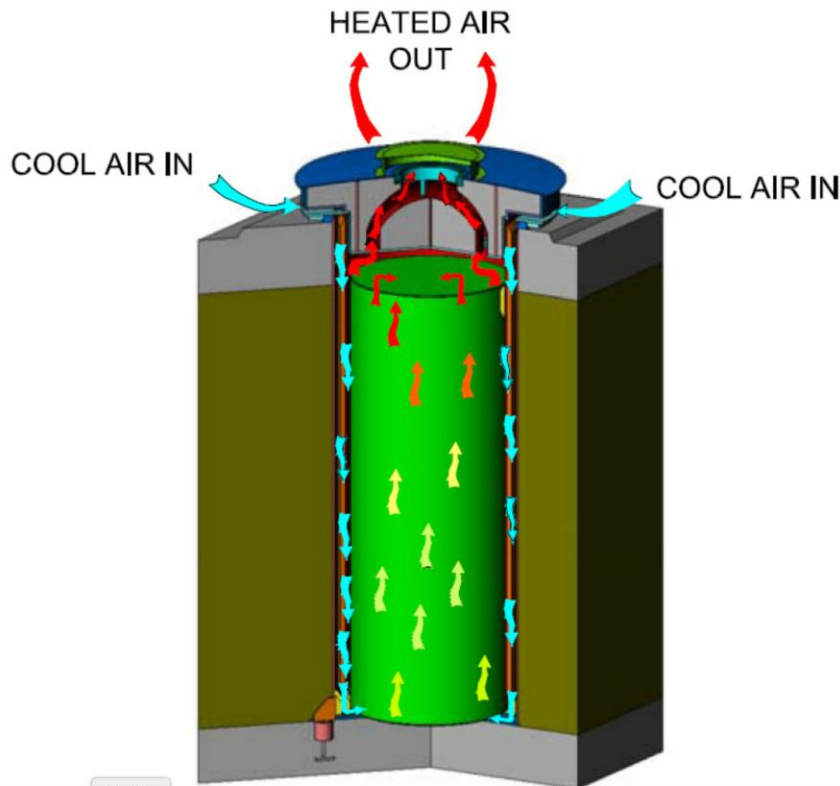
## Canisters At San Onofre Not Tested For Potential Supershear Earthquake

- Strike-Slip Faults Can Generate Supersonic Impulse Known As Supershear.
- Strike Slip Faults Located Near Nuclear Waste Canisters At San Onofre And Diablo Canyon.



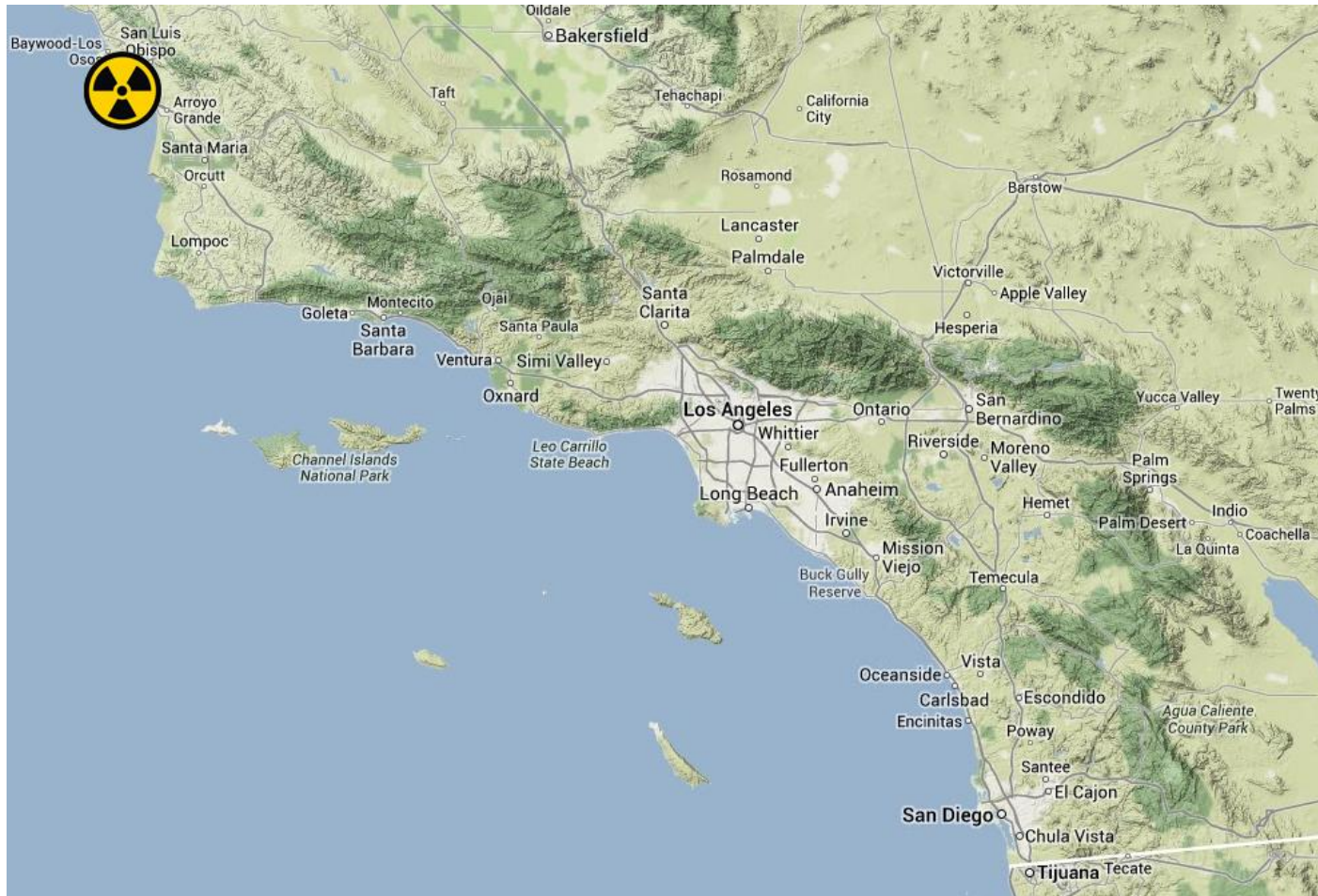
**After Earthquake Or Tsunami, Passive Air Cooling Vents Around Spent Fuel Canister Can Fill With Sand Or Salt Water, Overheating Canister Causing Nuclear Fire. Earthquake Could Also Block Vents By Shifting Canister To One Side.**

- If One Canister Catches Fire It will Be So Radioactive That It Will Not Be Possible To Clear Vents In Nearby Canisters Which Would Lead To Uncontrolled Nuclear Fire In **All** The Canisters.
- Equivalent To Forty Chernobyls In The SoCal Area With 8 Million People Nearby.



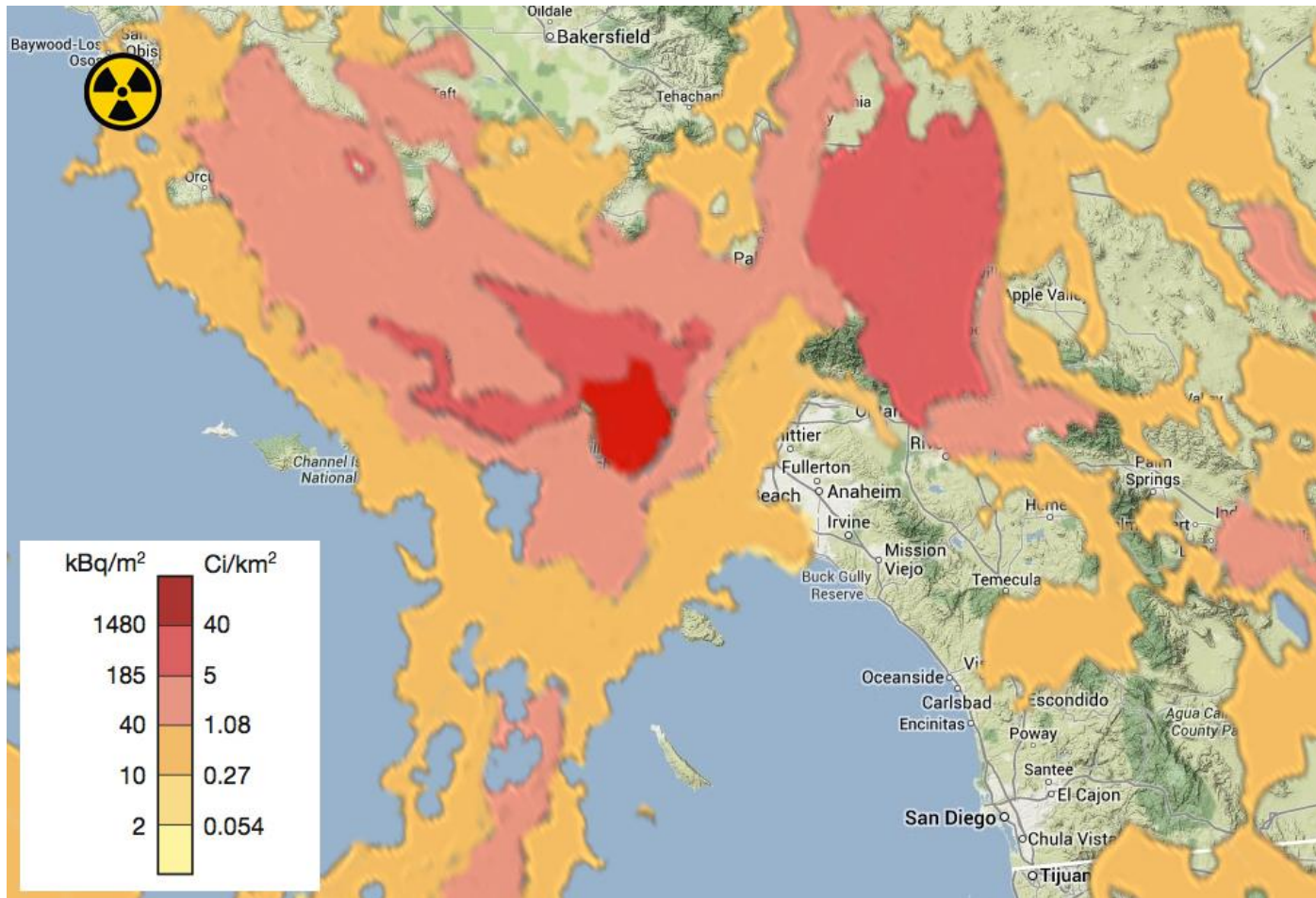
**Potential Loss Of Property Value,  
Health, Agricultural And Other  
Economic Damages To California  
After San Onofre Or Diablo Canyon  
Nuclear Power Plant Spent Nuclear  
Fuel Canister Fires Using Chernobyl  
Damages And Fallout Pattern As A  
Reference Base**

# Southern California Before San Onofre Or Diablo Canyon Nuclear **Spent Fuel** **Canister Fires.**





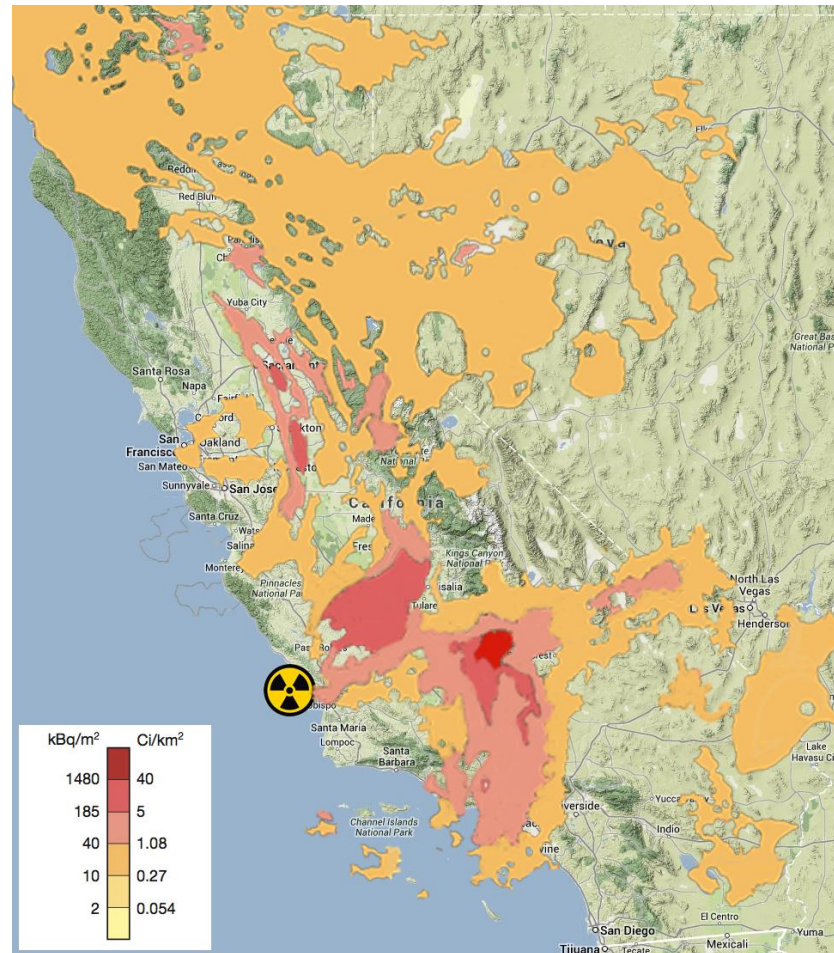
Areas Potentially Affected Economically In Southern California **After Nuclear Spent Fuel Canister Fires** At San Onofre Or Diablo Canyon Nuclear Plant Using Chernobyl Fallout At Same Scale. **Worst Case Is Much Worse.** If the Spent Fuel Burned Completely, **Multiply Concentration Or Fallout Area Below By 40 Times.** **Potential Property Value Loss For Those Living In These Areas.**



# California Before San Onofre Or Diablo Canyon Nuclear **Spent Fuel Canister Fires.**

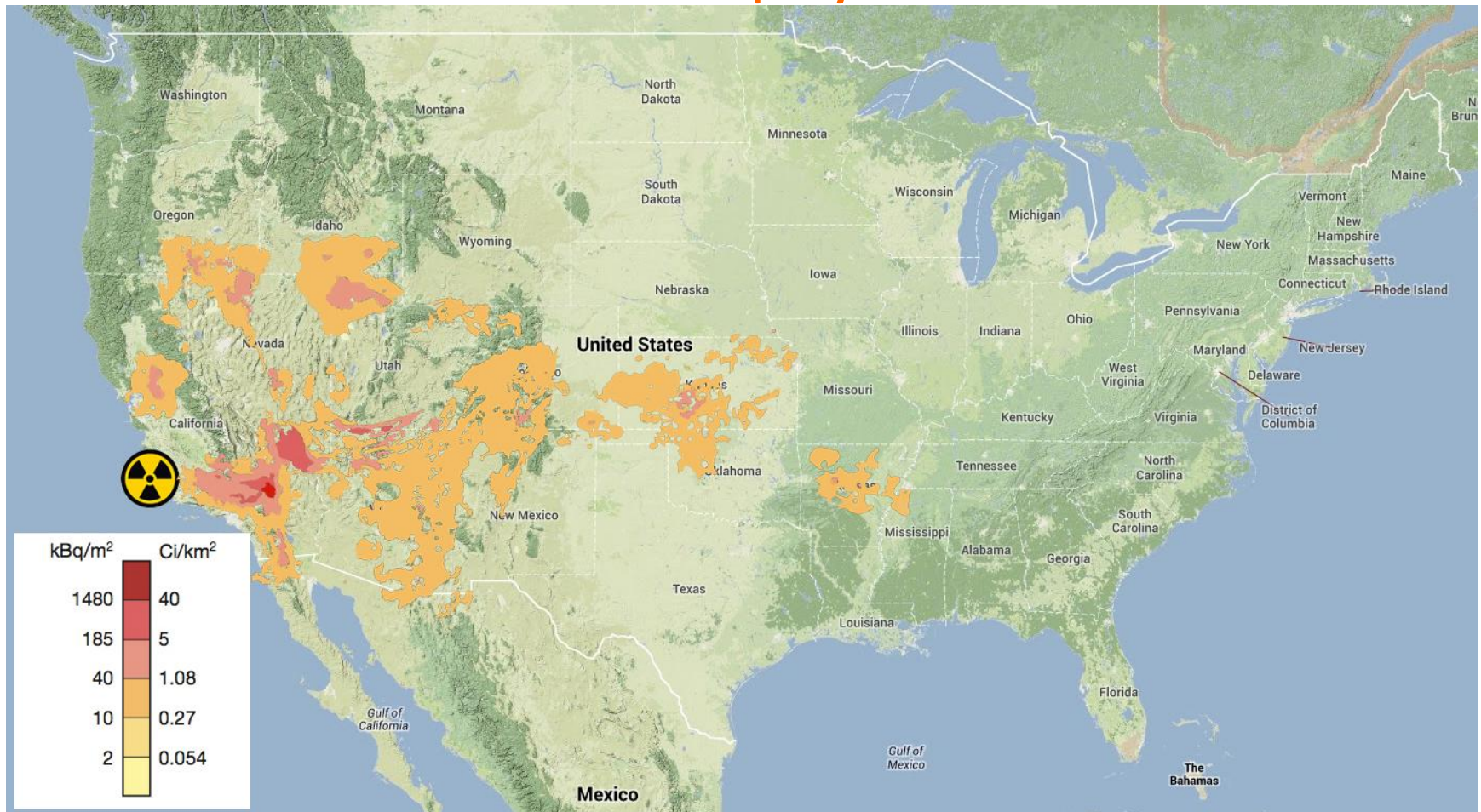


Potential California Areas That Could Suffer Economically After **Spent Fuel Canister Fires** At San Onofre or Diablo Canyon Nuclear Plant, Using Chernobyl Fallout Pattern At Same Scale. **Worst Case Is Much Worse.** If the Spent Fuel Burned Completely, **Multiply Fallout Concentration Or Fallout Area Below By 40 Times.** **Potential Property Value Loss For Many Living In These Areas.**





Areas Potentially Affected Economically After **Spent Fuel Canister Fires At San Onofre Or Diablo Canyon Nuclear Plant Using Chernobyl Fallout Pattern At Same Scale. *Worst Case Is Much Worse.*** If The Spent Fuel Burned Completely, **Multiply Fallout Concentration Or Fallout Area Below By 40 Times. Potential Loss Of Property Value In These Areas.**





# United States Before San Onofre Or Diablo Canyon Nuclear Power Plant **Spent Fuel** Canister Fires.



Click [here for a video](#) of this presentation by nuclear physicist Paul Frey